

PRO ATELIER PLUS

**多模具压扣机**

**快速入门手册**

**Button Machine**

**Quick Start Guide**

MODEL: MS-02-PAP

[www.ProAtelierPlus.com](http://www.ProAtelierPlus.com)

# 目录

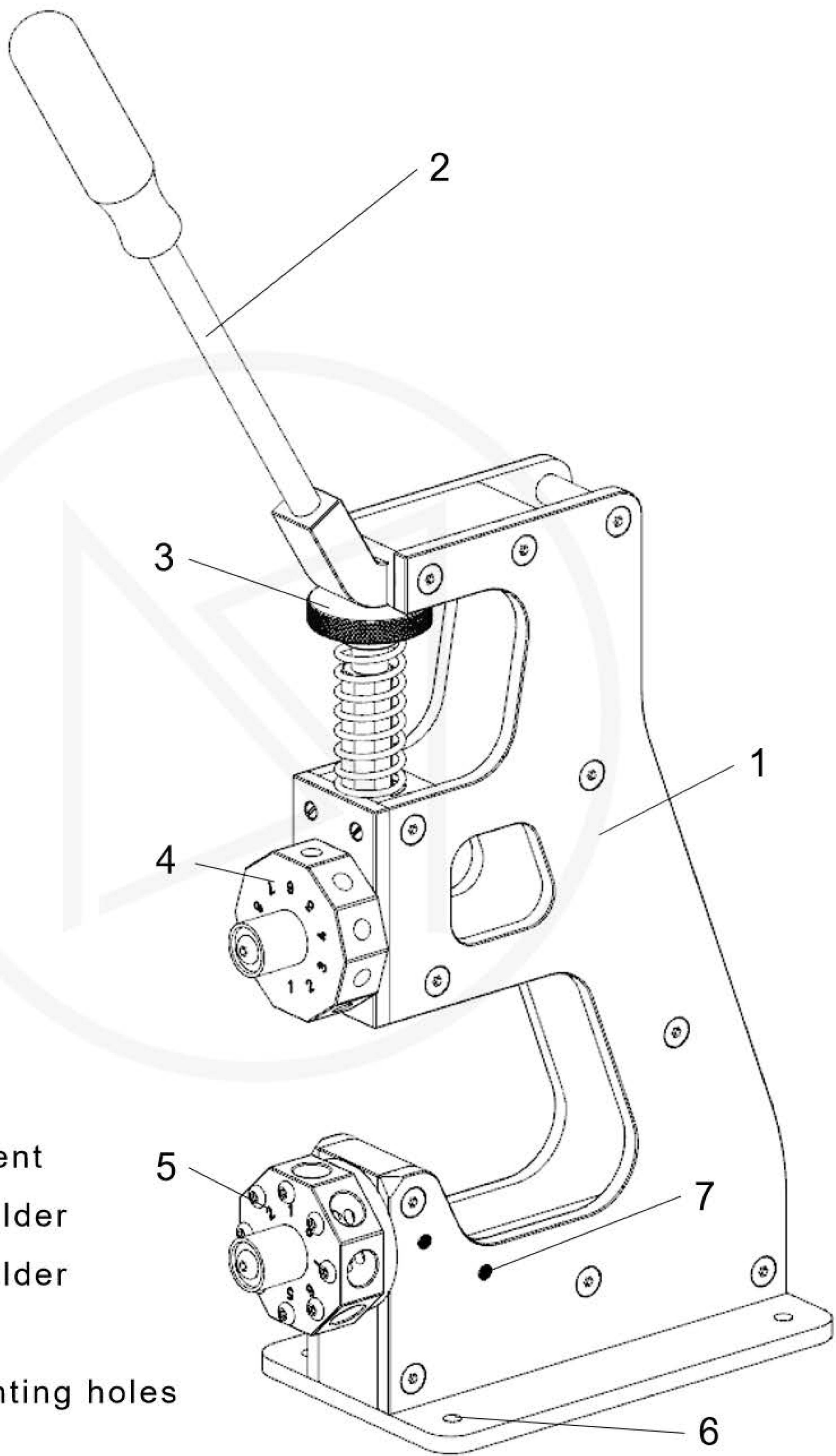
1.机器简介-----	2
2.手柄安装-----	3
3.行程调节-----	3
4.模具安装-----	4
5.机器固定-----	5
6.模具切换-----	6
7.定位装置-----	7
8.配件/其他-----	2

# Index

1.Introduction-----	2
2.Handle installation-----	3
3.Stroke adjustment -----	3
4.Molds installation -----	4
5.Fixed machine-----	5
6.Mold switching-----	6
7.Worktable-----	7
8.Attachments&others-----	2

- 1.机身
- 2.手柄
- 3.行程调节旋钮
- 4.上模具座
- 5.下模具座
- 6.固定孔
- 7.定位板安装位

- 1.Machine body
- 2.Handle
- 3.Stroke adjustment
- 4.Upper molds holder
- 5.Lower molds holder
- 6.Fixing holes
- 7.Worktable mounting holes



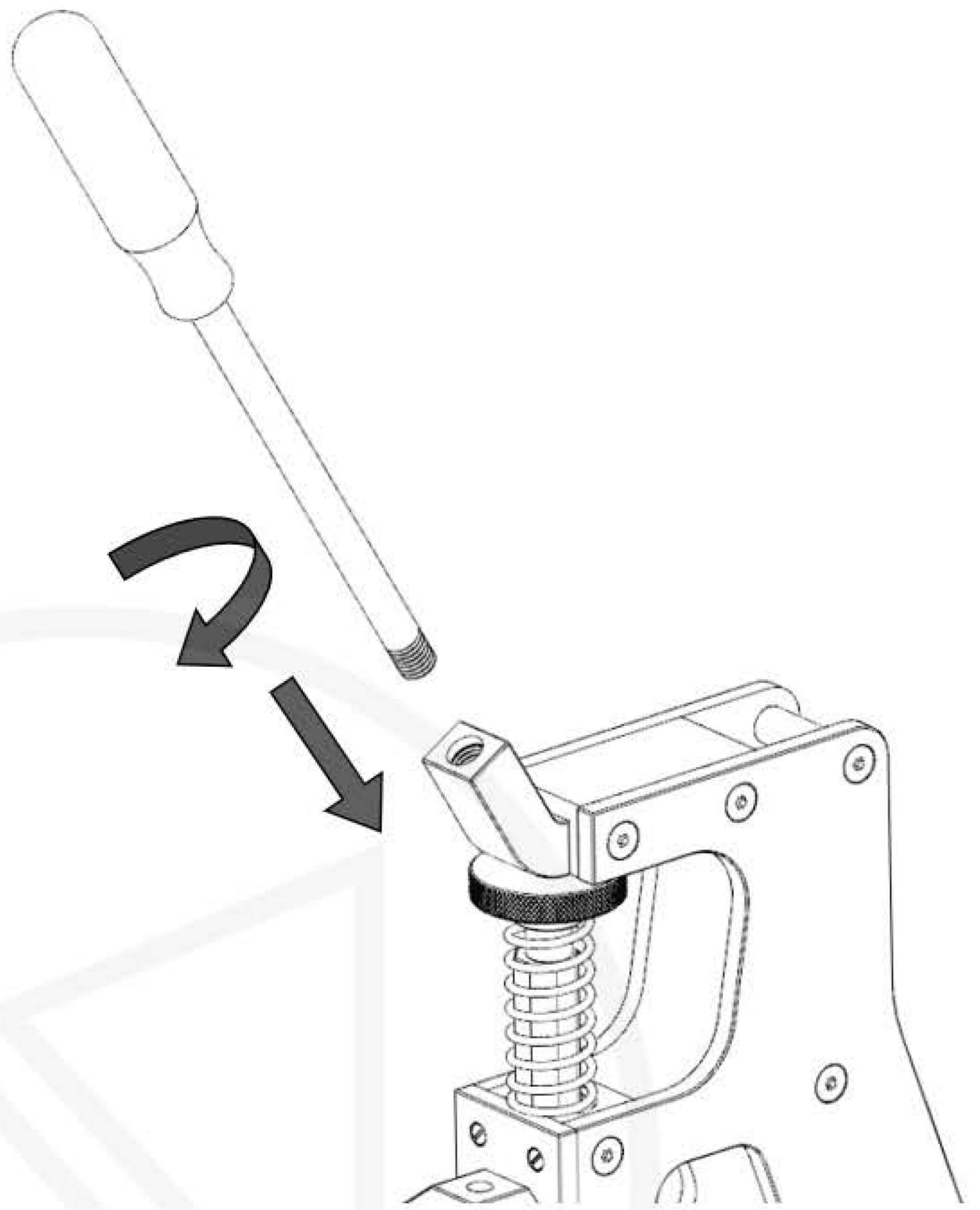


将手柄对准安装座孔位，  
顺时针旋转手柄，即可将手柄  
安装于机器上。

\* 务必将手柄旋转到底。

Align the handle with the  
mounting hole and rotate it  
clockwise to install the  
handle on the machine.

\* Be sure to install the  
handle in place.



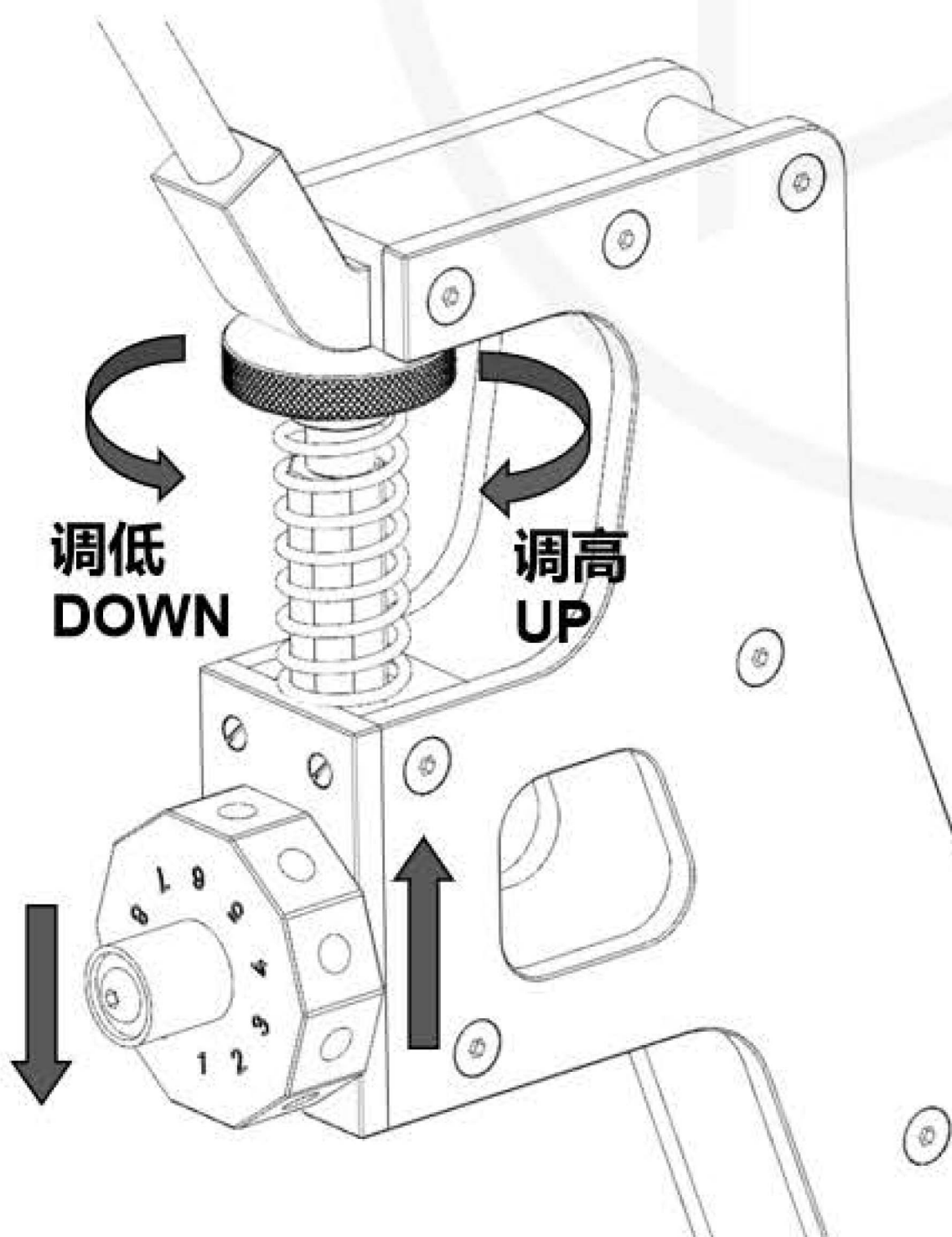
1. 顺时针旋转旋钮，调高上模  
具座。

2. 逆时针旋转旋钮，调低上模  
具座。

\* 请根据五金选择合适行程。

1. Turn the knob clockwise to  
raise the upper mold holder.

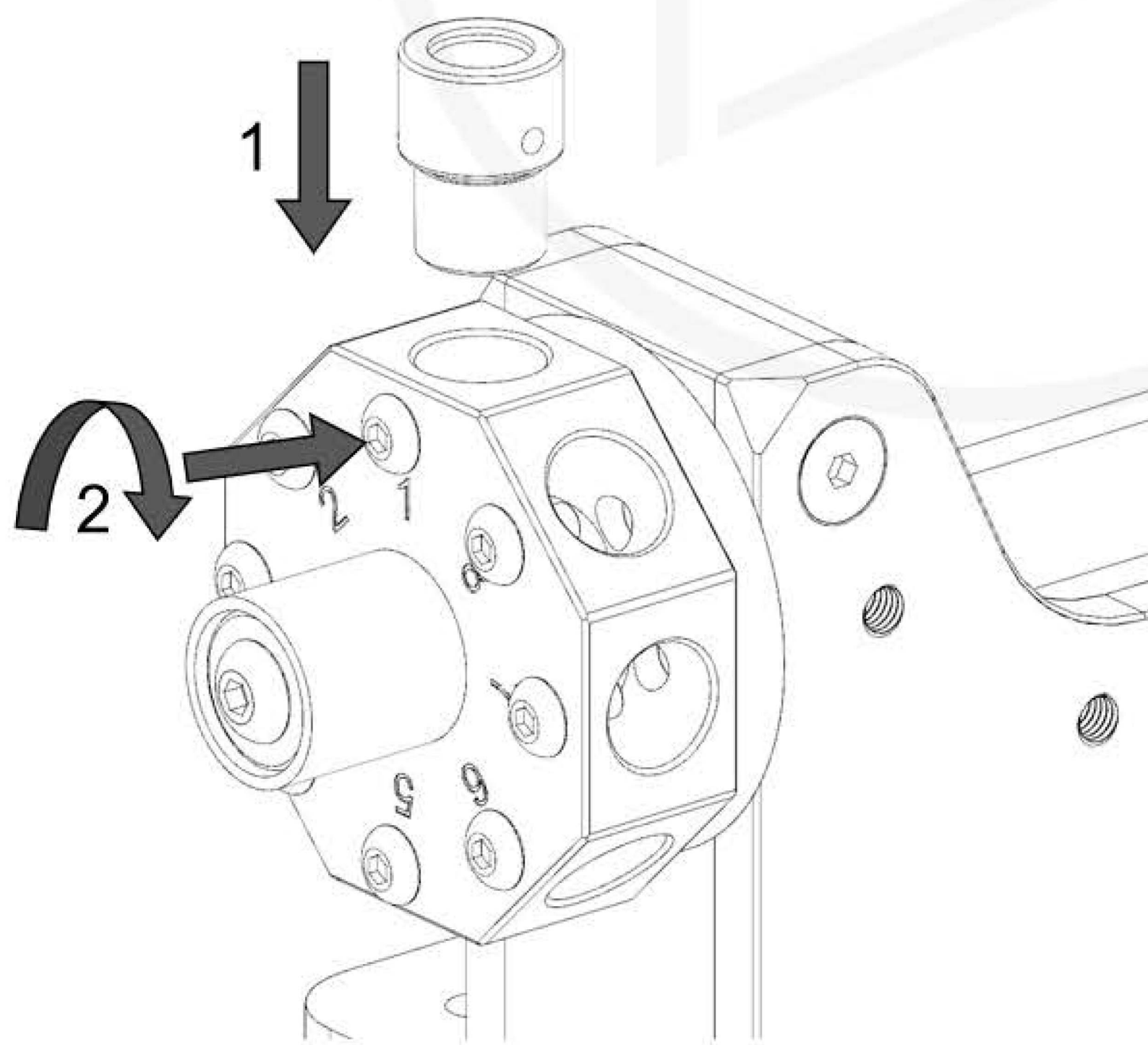
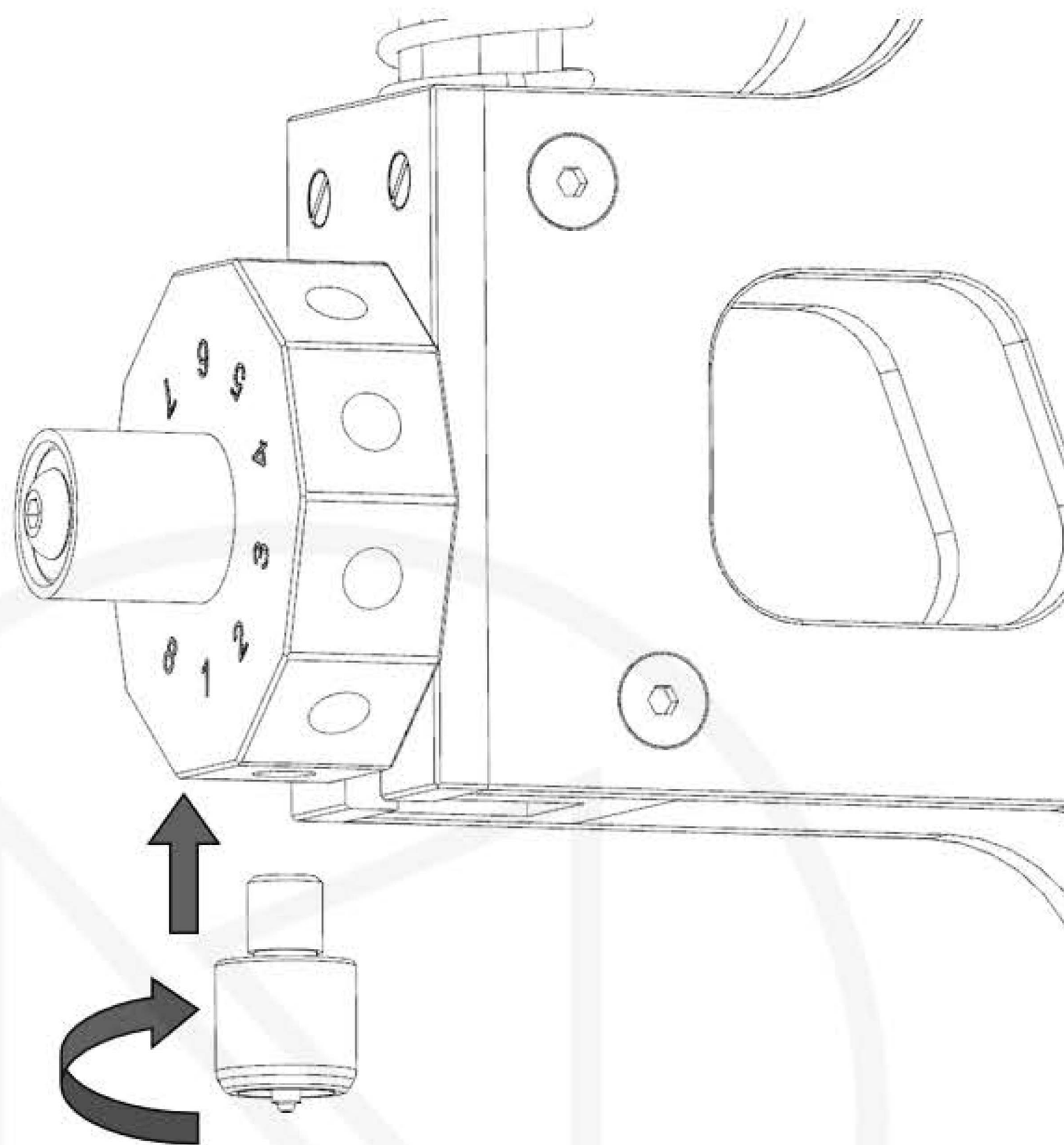
2. Turn the knob  
counterclockwise to lower the  
upper mold holder.





将顶模旋转安装于  
上模具座。

Rotate the mold and  
install it on the upper  
mold holder.



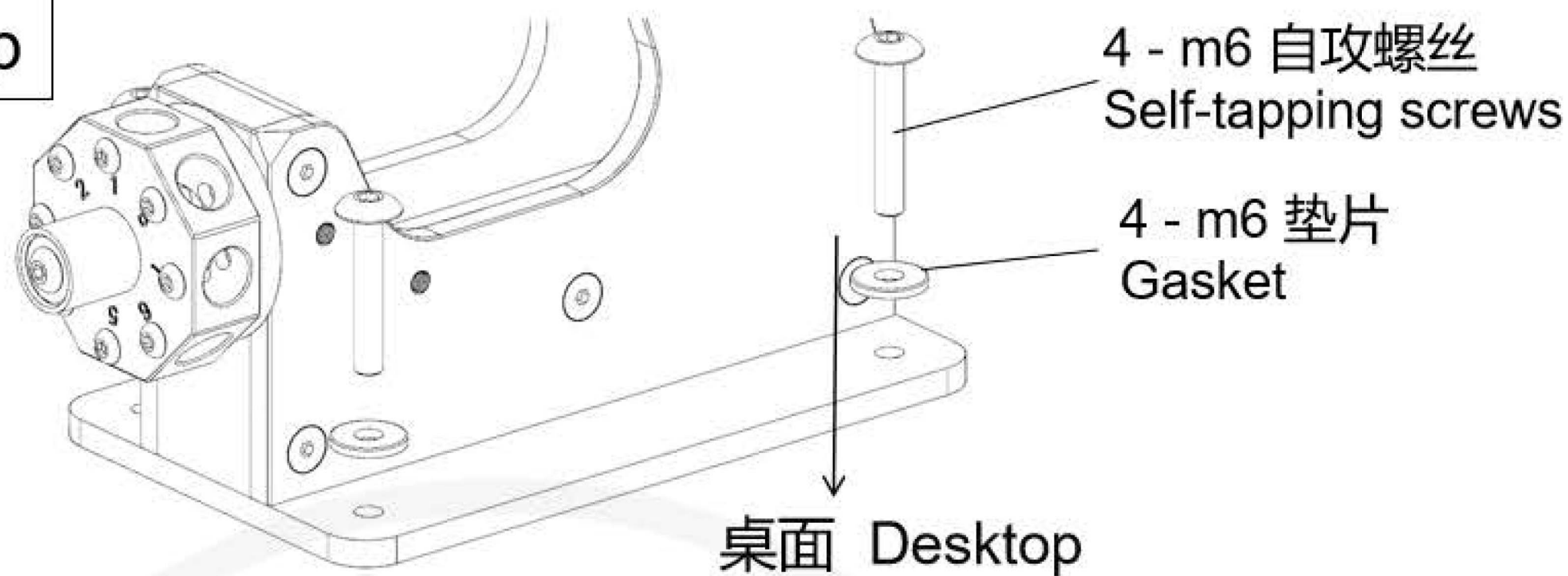
1.将底模放置于下模具  
座孔位。

2.使用扳手拧紧模具固  
定螺丝。

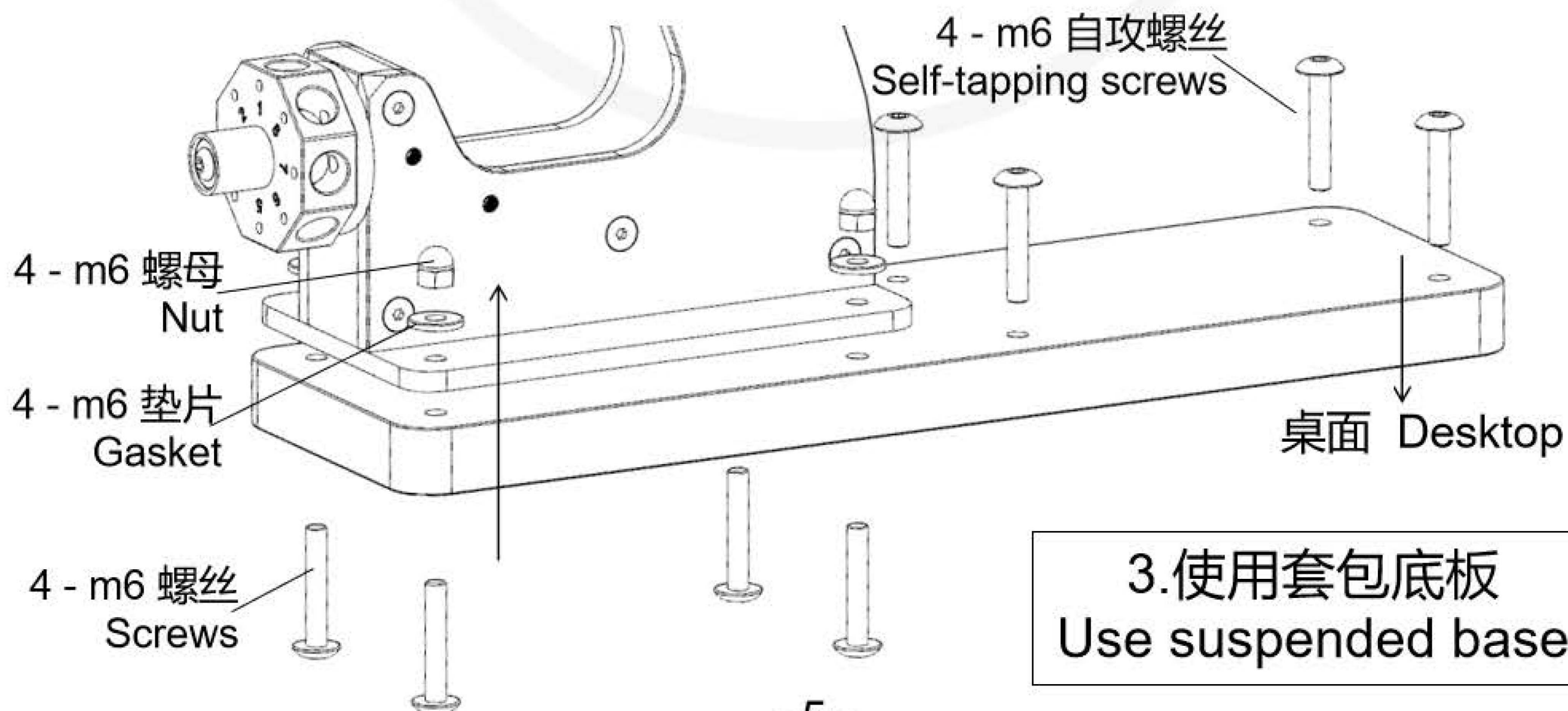
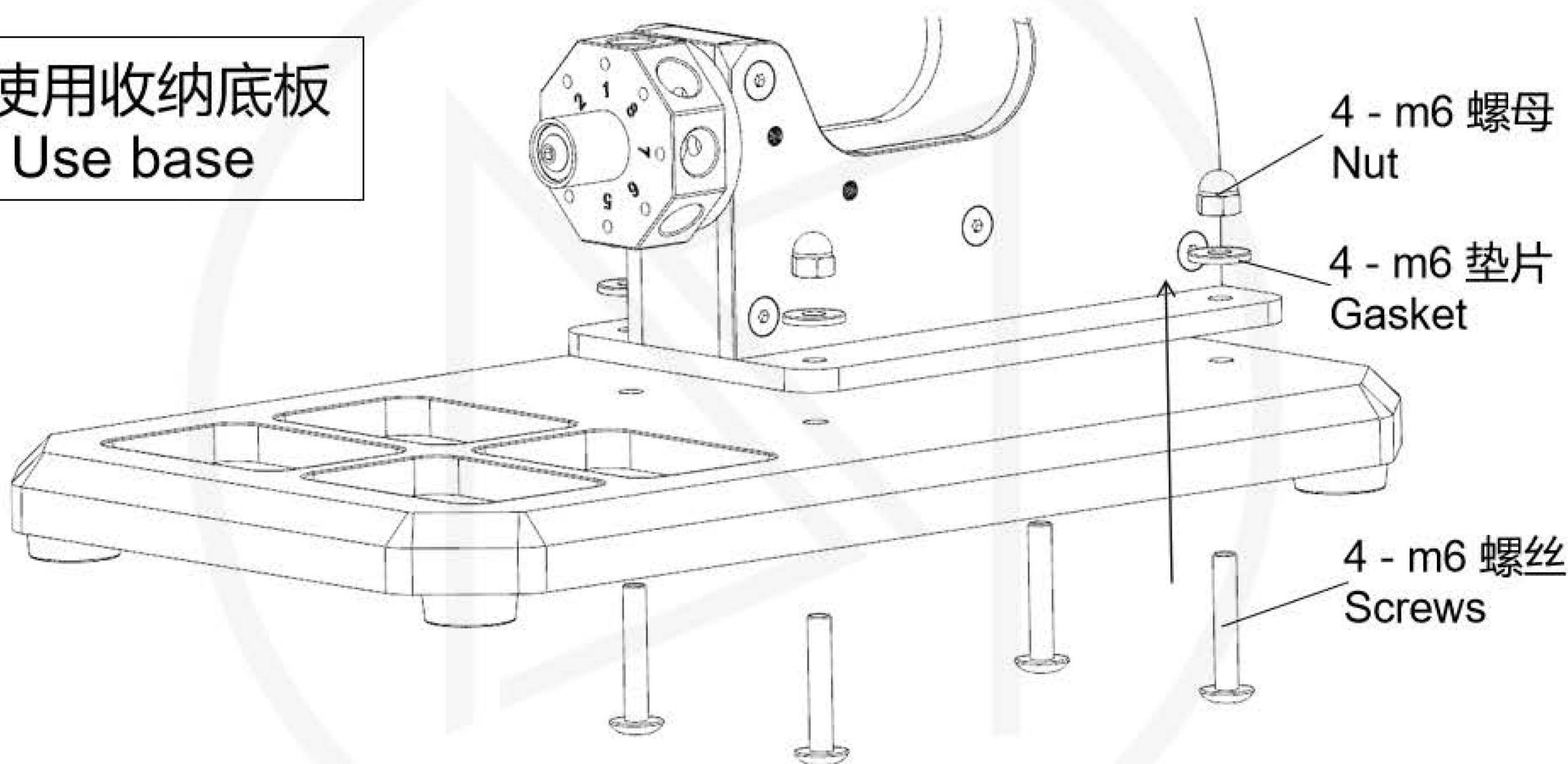
1. Put the mold in the  
hole position of the lower  
mold holder.

2. Use a wrench to tighten  
the fixing screws.

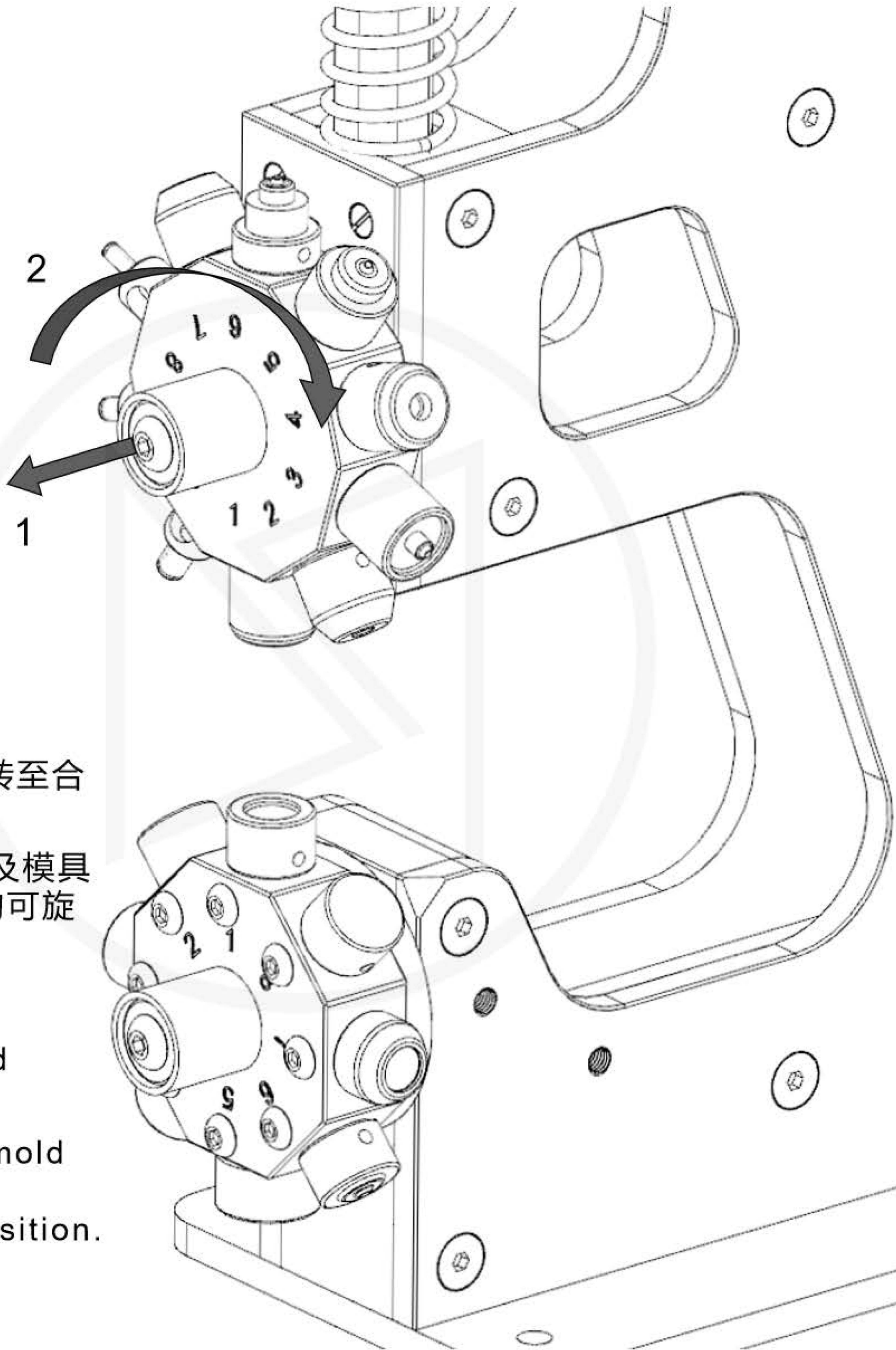
1.固定于桌面  
Fixed to desktop



2.使用收纳底板  
Use base



3.使用套包底板  
Use suspended base



1.提起模具座。

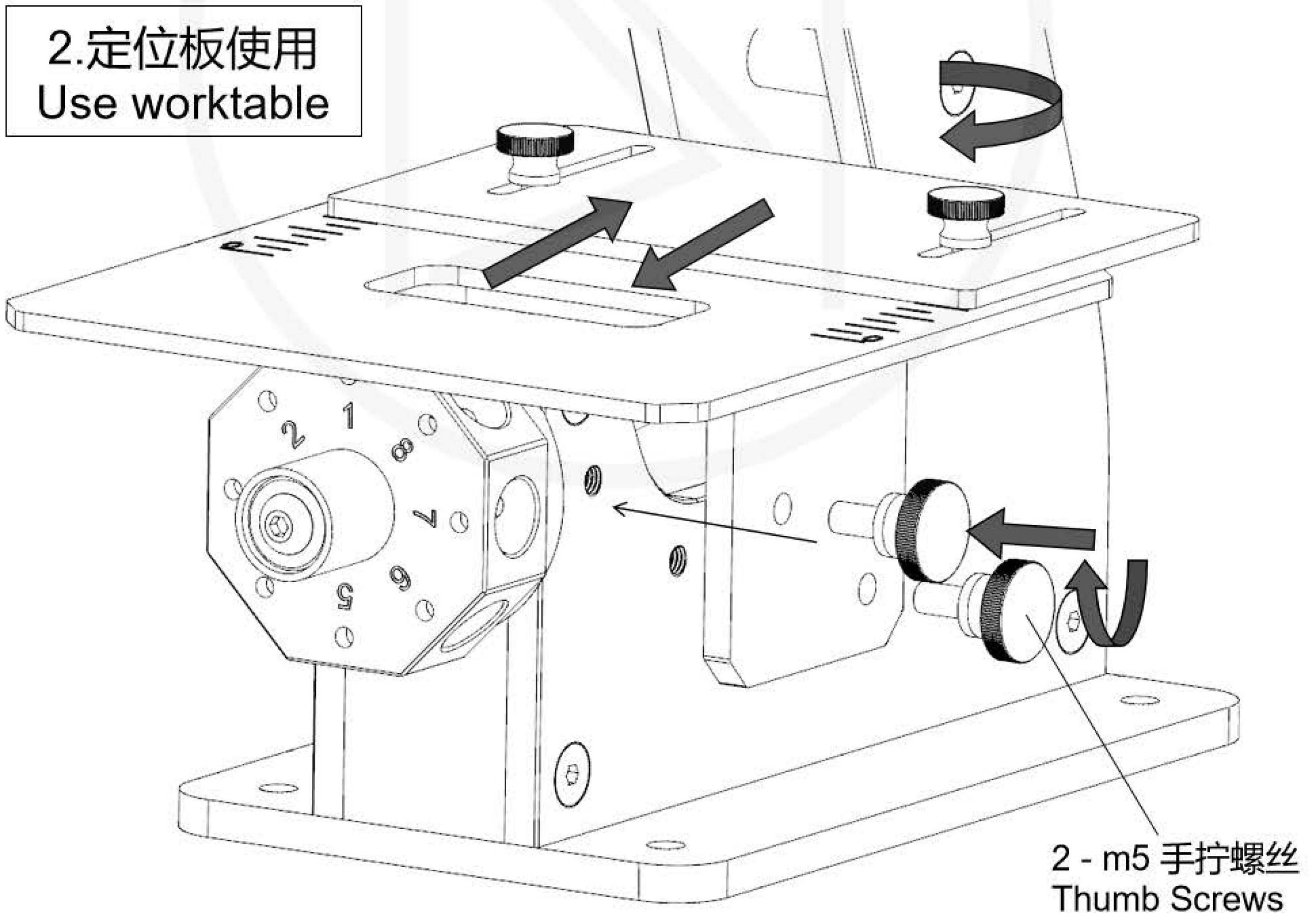
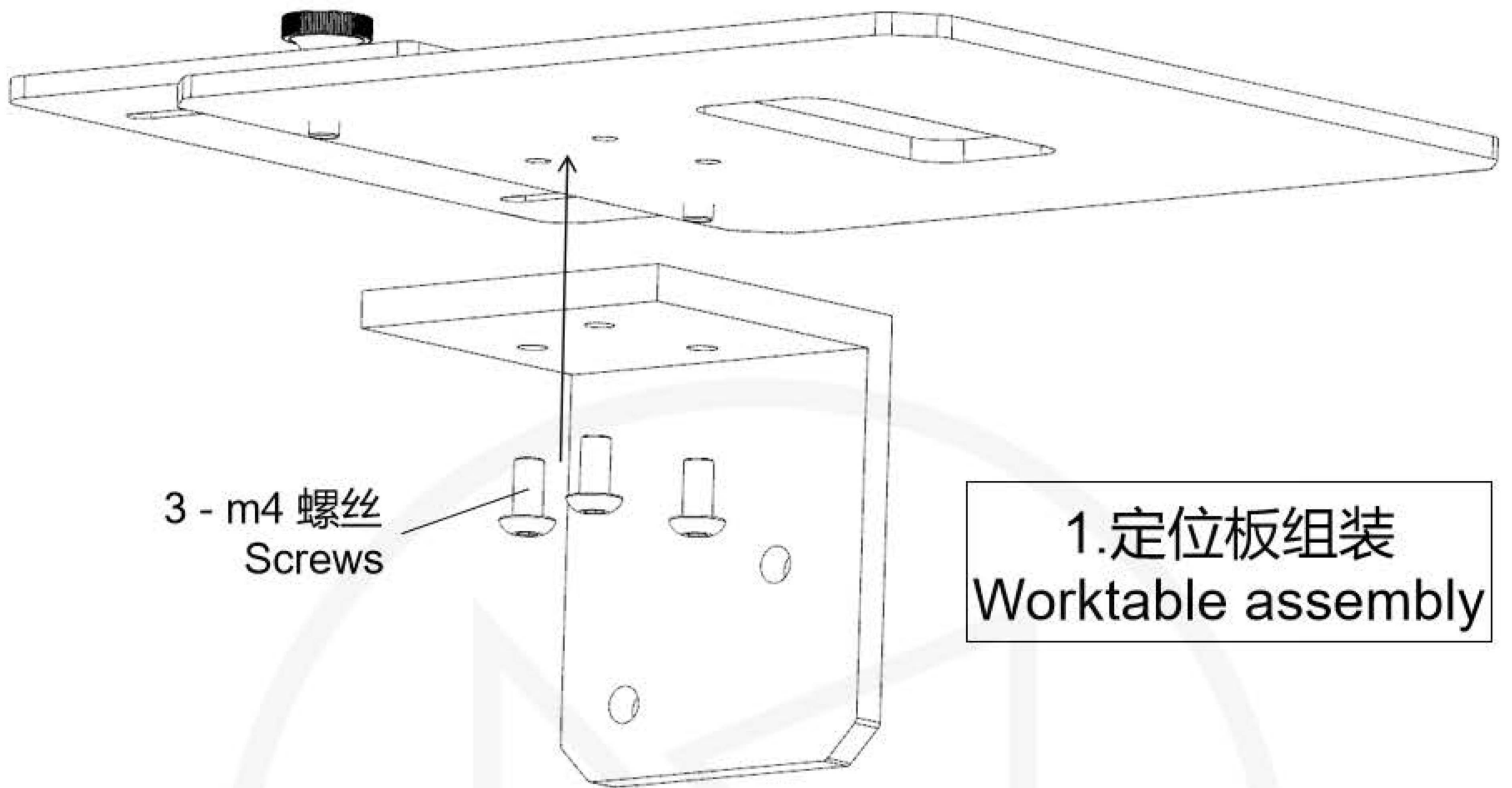
2.将模具座旋转至合适位置后松手。

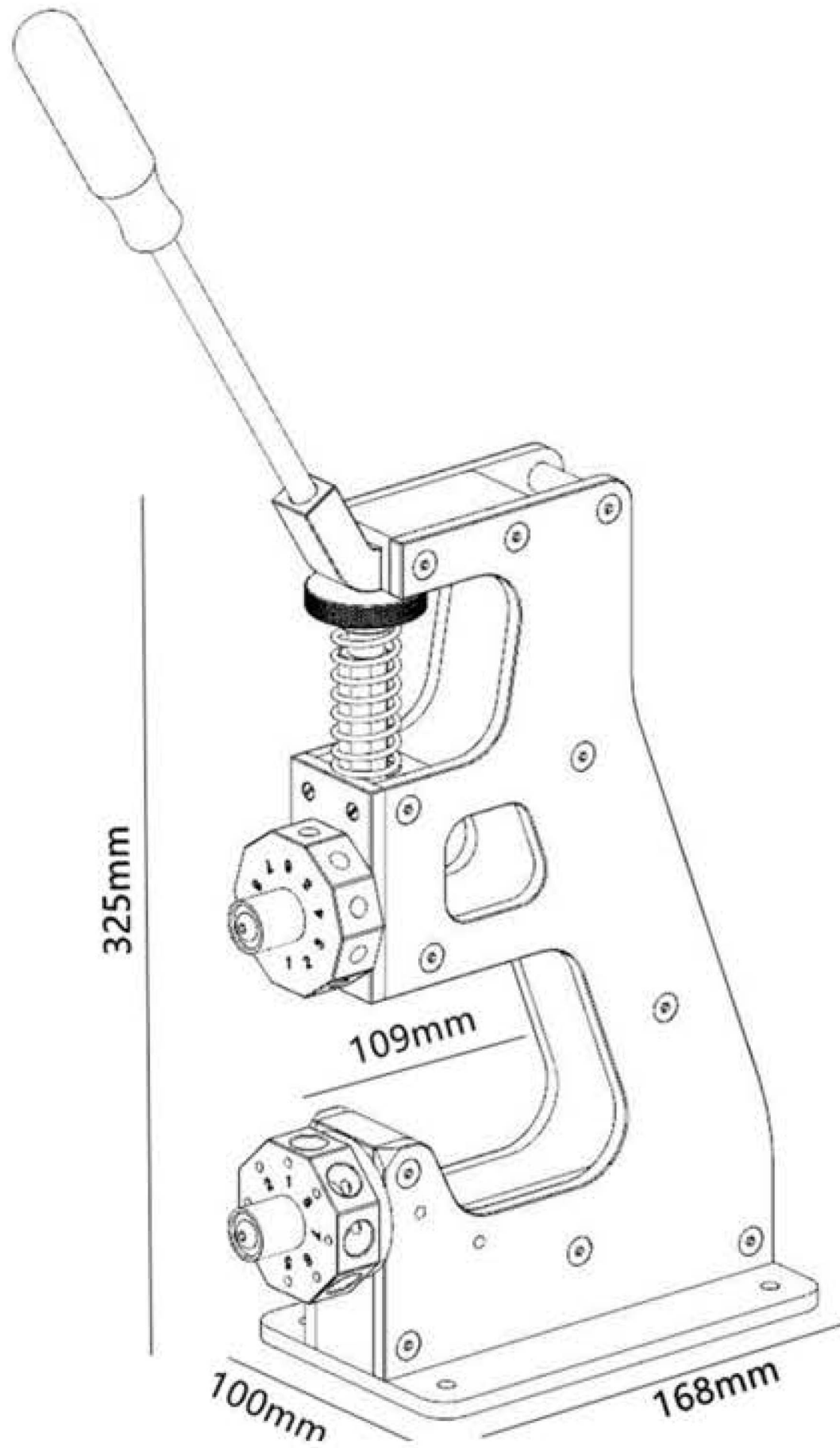
\* 注意数字提示及模具对应关系,双向均可旋转。

1.Lift the mold holder.

2.Rotate the mold holder to the appropriate position.







## Product Information

**Brand:** Pro Atelier Plus

**Model:** MS-02-PAP

**Material:**

Aluminum, Brass, Stainless steel

**Product size: (mm)**

Machine: 100\*168\* 325

Work depth: 109 mm

**Pallet size:**

Normal: 200\*340\*20

Suspension : 106\* 360\*20

**Weight:** 5.5kg (machine body)

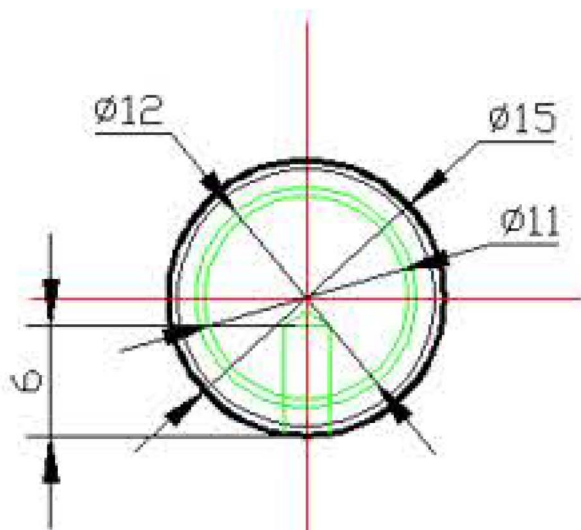
**Package size:** 400\*250\*220 mm

**Mold installation dimensions:**

Upper: M8

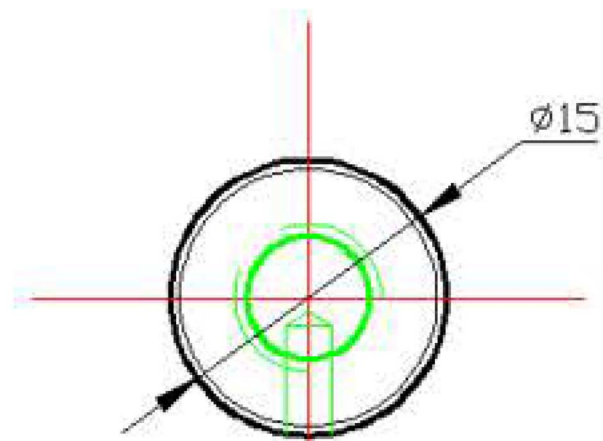
Lower:  $\varnothing 12$ mm

(The mold supports customization)

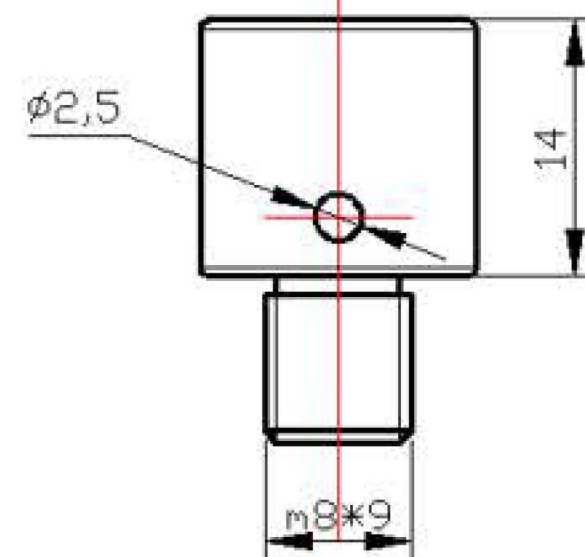
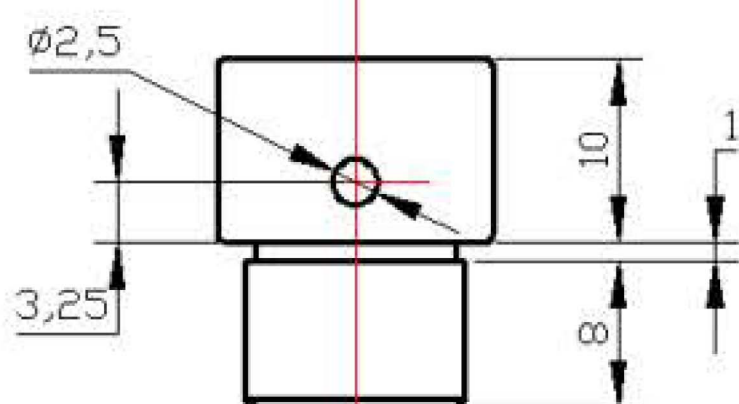


底模  
Lower

### 模具安装数据 Mold data



顶模  
Upper







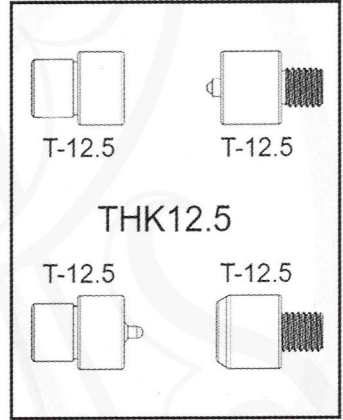
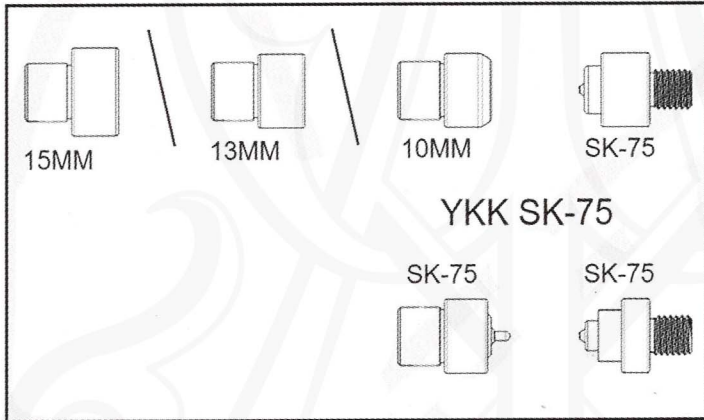
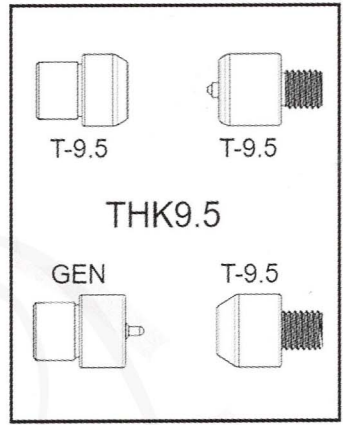
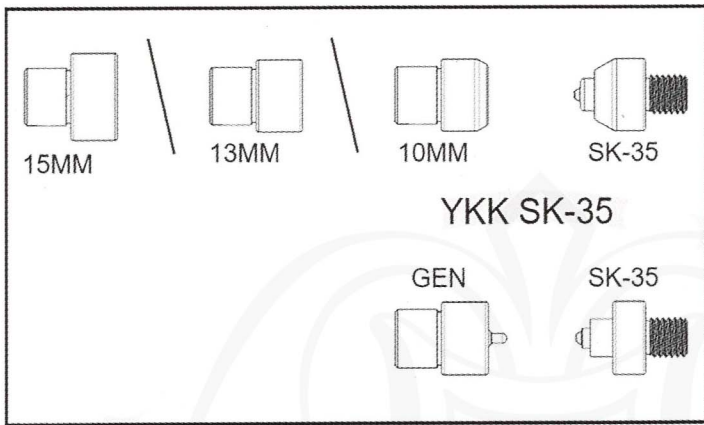
烫金机  
Hot Stamping Machine



压扣机模具  
Button Machine molds

更多工具设备陆续推出敬请期待!  
More tools and machines are coming soon!





BUTTON SETTING  
MACHINE DIES  
MODEL:MS-02-PAP

